



ENROLL EARLY! - LIMITED SPACE AVAILABLE!

ANTH 484/854 TRAVELING ENTHROGRAPHIC FIELD SCHOOL: INDIGENOUS LIFE WAYS/ WORLDVIES
A Unique Three Week Summer Opportunity
(July 17—August 5) 4 credit hours

STOP BY THE ANTHRO DEPT OFFICE (OLDH 810) TO FILL OUT A STUDENT INTEREST SHEET TO RESERVE YOUR PLACE

Prof. Mark Awakuni-Swetland
(Anthropology/Native American Studies*)
mawakuni-swetland2@unl.edu

Prof. Tom Gannon
(English/Native American Studies*)
tgannon2@unl.edu

This course is a multi-discipline hands-on experiential field school that examines and replicates Indigenous subsistence practices in the Great Plains from the pre-historic through early-historic period.

We will be in residence for three weeks (July 17-August 5) at the Cedar Point Biological Station (north of Ogallala, NE, just east of Lake McConaughy), where students will select from a sampler of Indigenous food gathering, tool making, and cooking strategies to research, gather materials from the local landscape, and render into their end products.

The middle week will include a focus on the comparative study of Indigenous and Western literature (and tourist flyers) as competing discourses & perspectives on water.

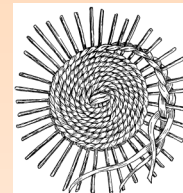
Both subsistence practices and water perspectives will be augmented by student observations of the local environment, daily journaling, and an integrated final essay.

CORRECTION: There is a \$525 room and board fee at Cedar Point in addition to the regular tuition and fees. There are dormitories, large lodge with dining hall, class rooms, research labs, and a computer lab,

** Substitution credit for Ethnic Studies major & minor, and Native American Studies minor readily available. All majors welcome (incl. HORT, NRES, TEAC, ENGL . . .)!*

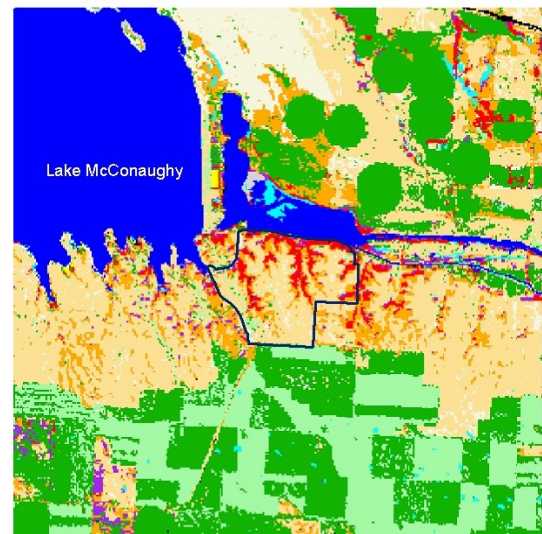
A Resident Undergraduate would pay approximately **\$1,400.50** which **does not include transportation.**

Tuition & Fees	\$870.50
Room & Board	525.00
Field Trip Insurance	5.00
Transportation	Recommend Car Pooling



Cedar Point Biological Station

0 1 2 KM



Land Use

Agricultural Fields	Juniper Woodland	Riparian Woodland
Aquatic Bed Wetland	Low Intensity Residential	Sandhills Upland Prairie
Barren/Sand/Outcrop	Lowland Tallgrass Prairie	Western Shortgrass Prairie
Commercial/Industrial/Transportation	Open Water	Riparian Shrubland
Deciduous Forest/Woodland	Emergent Wetland	

