



# Pan Pacific Study Tour

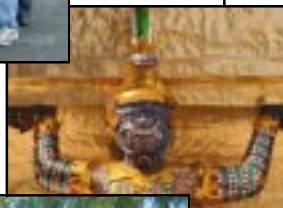
## Southeast Asia and Australia

### International Business

Summer Study Abroad

*Class Sessions in Bangkok: May 10 to 19, 2010*

*Travel Dates: May 20 - June 4, 2010*



**Bangkok, Thailand**

**Kuala Lumpur, Malaysia**

**Perth, Australia**

**Bali, Indonesia**

- **Broaden the student’s professional perspective through an improved knowledge of international business.**
- **Provide information in business functional areas relating to people, customer service, sales and marketing in large and small business contexts.**
- **Encourage a greater understanding and awareness of the positions of Southeast Asia and Australia in the world economy.**
- **Interact with professors and business professionals at an international professional conference.**

### On Tour

During the international experience, you will participate in classes held in Bangkok, Thailand, where you will also tour businesses, visit business assistance organizations, and engage in learning and social activities with students from Bangkok University. From Thailand, we will travel to Kuala Lumpur, Malaysia, where we will interact with one of UNL’s largest alumni chapters. Then, it is on to Perth, Australia, to experience business “down under.” Finally, we will attend the Pan Pacific Business Association (PPBA) Conference in Bali, Indonesia, which, this year, will be held in conjunction with the Asia Marketing Federation and UN Global Compact Network. (The basic goal of PPBA is to provide a forum for scholars, executives, and government officials from Pacific-Rim countries to discuss more effective utilization of human resources, technology, and multilateral economic activities across borders. Formed in 1991, the Asia Pacific Marketing Federation (APMF) is a regional marketing body representing over 25,000 marketing professionals in the region. The United Nations Global Compact is a strategic policy initiative for businesses that are committed to aligning their operations and strategies with ten universally accepted principles in the areas of human rights, labor, environment and anti-corruption.) We will also have time to get a little “Bali high” by seeing the sights. You’ll keep a journal to remind you of all the experiences you have. A combination of planned course-related activities and personal time allows you to receive credit for your participation and provides ample opportunities for you to do and see the things you want in each country.

### Prior to Departure

You will engage in a variety of learning activities prior to departing the United States. As preparation for your coursework you will be expected to read about business, economic, political, and cultural aspects of the countries to be visited. You will perform research that will serve as a foundation for analyzing business practices in Thailand, Malaysia, Australia, and Indonesia, which are at the core of the courses you will take.

### Tentative Itinerary

The itinerary is in development. Presentations by local businesses will be scheduled to represent the key players in financial services, banking, retailing, manufacturing, transport, information technology, agriculture and trade and commerce. Classes will be scheduled throughout the tour.

### Faculty Leaders

**Dr. Ron Hampton**, Chair of Marketing Department. rhampton1@unl.edu.

**Dr. Terry Sebor**a, Associate Professor of Management, tseboral@unl.edu

9 May Leave Omaha	10 May Arrive in Bangkok	11 May Bangkok	12 May Bangkok	13 May Bangkok	14 May Bangkok	15 May Bangkok
16 May Bangkok	17 May Bangkok	18 May Bangkok	19 May Bangkok	20 May Bangkok to Kuala Lumpur	21 May Kuala Lumpur	22 May Kuala Lumpur
23 May Kuala Lumpur	24 May Kuala Lumpur to Perth	25 May Perth	26 May Perth	27 May Perth	28 May Perth	29 May Perth to Bali
30 May Bali	31 May Bali	1 June Bali	2 June Bali	3 June Bali	4 June Bali to Omaha	

### Earn UNL Credits

Six hours of credit may be earned for participating in the Pan Pacific Study Tour. Students are encouraged to meet with their advisors to discuss credit options. Students are responsible for registering for their course selections through eNRoll.

Two courses are offered for this tour.

### UNL Credits

1. *Comparative International Small Business* (3 cr.) Dr. Terry Sebor

Undergraduates: MNGT 398

Graduate Students: MNGT 996a,

2. *International Marketing/Business Administration* (3 cr.) Dr. Ron Hampton

Undergraduates: BSAD 491

Graduate Students: MRKT 996,

## eNRoll

eNRoll during the Summer Sessions registration period in March. You can obtain the call number for this 8-week session course from the academic department sponsor. Non-UNL students must be admitted to UNL. An on-line visiting student application is available at graduate and undergraduate levels, [www.admissions.unl.edu](http://www.admissions.unl.edu) (undergraduate) or [www.unl.edu/gradstudies](http://www.unl.edu/gradstudies).

Graduate credit is under the supervision of, and therefore granted by, the Graduate Faculty of the University of Nebraska-Lincoln. Graduate credit can be obtained by previous arrangement with the Graduate College.

## Scholarships and Financial Aid

Students enrolled in a UNL World Campus summer study abroad program may be eligible for federal student financial aid, including student loans. Students interested in applying for aid must complete the FAFSA and a study abroad worksheet available from the Financial Aid Office. Contact a Study Abroad Financial Aid Advisor at Scholarships & Financial Aid, 17 Canfield, 472-2030 for information on applying and finding out if you can use your current scholarship for study abroad. Summer financial aid applications are available on-line on WAM March 1.

For study abroad scholarship information contact International Affairs, 472-5358.

## Program Fee

The program fee for the Pan Pacific Study Tour is approximately \$2,795. The program fee includes:

- Airfare between Thailand, Malaysia, Australia, and Indonesia
- Airport transfers
- Airport departure taxes
- Visas
- Hotel accommodations (double/triple/quad)
- Pan Pacific Conference registration
- Transportation to group tours and activities
- Health insurance
- Specified cultural experiences and sightseeing

**The program fee does not include:** Airfare to Bangkok from your preferred city or airfare from Bali to your preferred city, tuition and fees, books, individual sightseeing, passports, phone calls, souvenirs, or non-specified meals. *NOTE: A group airfare rate from Omaha to Bangkok and from Bali to Omaha has been arranged at a cost of approximately \$1200 per person. You are invited to participate in this group rate or you can arrange your own flights to and from Bangkok and Bali.*

Tuition and fees will be billed separately by UNL student accounts and will be due approximately May 12.

## How to Apply

Applications for the Pan Pacific Study Tour are due January 22, 2010 with a \$500 deposit. A maximum of 30 students will be allowed on this study tour. Priority will be given to students who have attained at least junior standing by May 9, 2010 and register for 6 credit hours. If the 30 tour positions are not filled by students taking credit, remaining vacancies will be filled on a first come, first serve, date of deposit basis. Late applications will be considered if space is available. Participants who withdraw after January 22, 2010, will be assessed a \$150 cancellation fee plus irrecoverable costs. Cancellations must be made in writing to International Affairs.

To Apply for the Pan Pacific Study Tour.

1. Complete the application (form A and form B) available on the International Affairs website [www.unl.edu/iaffairs](http://www.unl.edu/iaffairs) or from [www.cba.unl.edu/dept/management/ppst](http://www.cba.unl.edu/dept/management/ppst)
2. Submit Form A and B, along with a deposit of \$500 to International Affairs, 420 University Terrace. Please make all checks payable to UNL.
3. Register through eNroll during the open enrollment period for Summer Sessions.
4. Group size for the Pan Pacific Study Tour is limited, apply by January 22nd.

## At a Glance...

- **Location:**  
Southeast Asia and Australia
- **Program Length:**  
Four weeks
- **2010 Program Dates:**  
Bangkok sessions: May 10-19  
Travel Dates: May 20-June 4
- **Credits: (3 cr. each):**  
MNGT 398/996a  
BSAD 491  
MRKT 996
- **Cost:**  
Estimated program cost: \$2,795  
Plus airfare (estimate \$1,200) and tuition & fees  
(Tuition is about \$1,320 for 6 credits, resident, undergraduate).
- **Payment Schedule**  
January 22 – \$500 deposit  
February 26 – \$1000  
March 26 – \$1295 (airfare also due if participating in group rate)
- **Application Deadlines:**  
January 22 – reservation deadline with \$500 deposit.
- **Contacts:**  
International Affairs  
420 University Terrace  
Lincoln, NE 68588-0682  
(402) 472-5358  
E-mail: [iaffairs@unl.edu](mailto:iaffairs@unl.edu)  
[www.unl.edu/iaffairs](http://www.unl.edu/iaffairs)  
  
Dr. Terry Sebor  
[tsebor1@unl.edu](mailto:tsebor1@unl.edu)  
  
Dr. Ron Hampton  
[rhampton1@unl.edu](mailto:rhampton1@unl.edu)  
  
Scholarships & Financial Aid  
[finaid2@unl.edu](mailto:finaid2@unl.edu)  
17 Canfield Admin.  
(402) 472-2030



# Pan Pacific Study Tour

## Southeast Asia and Australia

### Pan Pacific Study Tour Summer Study Abroad

Class sessions in Bangkok: May 10 - 19, 2010

Travel Dates: May 20 - June 4, 2010

### 7 Great Reasons to Join this Study Abroad Program

1. Learn more about other countries' current business, economic and political situation up close and personal.
2. Be inspired by the landscapes, history and people from a culture and lifestyle different from your own.
3. Earn valuable credits towards your degree while obtaining practical experience.
4. Identify the potential for new emerging markets, trade and investment opportunities in Southeast and Australia
5. Travel with a diverse group of students who each add a unique quality to this tour.
6. Gain a competitive edge over other job applicants.
7. Have fun and make new friends.

#### UNDERGRADUATE REQUIREMENTS FULFILLED BY COURSES OFFERED

Management 398* Comparative International Small Business	Block V/Module V Required Course for Major	Block III Electives Module 6, Business Elective	Business Administration 491* International Marketing	Block V/ Module V* Required Course for Major	Block III Module 6 as Elective
Accounting	No	Yes	Accounting	No	Yes
Agribusiness	No	Yes	Agribusiness	No	Yes
Actuarial Science	No	Yes	Actuarial Science	No	Yes
Business Administration	Yes*	Yes	Business Administration	Yes*	Yes
Economics	No	Yes	Economics	No	Yes
Finance	No	Yes	Finance	No	Yes
International Business	Yes*	Yes	International Business	Yes*	Yes
Management	Yes	Yes	Marketing	Yes	Yes
Marketing	Yes	Yes	Management	Yes	Yes

\*Providing taken for a grade and you need a 300/400 level requirement and appropriate departmental designation.

MGNT 398 if taken as part of the Pan Pacific Program is an approved ICR, by special substitution. BSAS491 is automatically accepted as an ICR.