



▶ LIBRARY FUNDS . . . . . 2

▶ FACULTY & COORDINATORS:  
MERIT FILE INFO. . . . . 2



▶ UPDATED LANGUAGE AND  
FILM CLUB INFORMATION . . . 3



▶ GERMAN MOVIE INFO . . . 4

▶ SPANISH MOVIE INFO . . . 5

# Department of Modern Languages & Literatures Newsletter

Please send your announcements and updates for the weekly newsletter to Nancy ([npetitto2@unl.edu](mailto:npetitto2@unl.edu)) by 5 pm on Thursdays

NEH has issued an RFP to host summer seminars. Proposals are due March 1. See guidelines at [www.neh.gov/grants/guidelines/seminars.html](http://www.neh.gov/grants/guidelines/seminars.html)

Post your events to the online Arts & Sciences Events *Calendar*. For assistance, contact the office staff.

Full-time Lecturers: Do you know that you are eligible for \$300 annually to be used towards travel for a conference? Complete details can be found on the *A&S website*.

## Essay Contest for Students

The essay must be on the topic “Battle of Puebla of the 5 de mayo and its effects on the US Civil War.” The essay must be 1250-1500 words, and should focus on the relationship between Presidents Lincoln and Juarez as well as the outcome of the famous battle in Puebla in 1862 and its influence on the American Civil War. The deadline is February 28, 2012. The competition is open to all college students enrolled at the time of entry, anywhere in the US, irrespective of citizenship or place of study.

First prize is \$5,000. Second prize is \$3,000. Third prize is \$1,000. The prizes will be presented in Puebla Mexico during the celebration of the 5 de mayo battle in May 2012. The Secretary of Education of the State of Puebla Mexico will pay travel expenses.

For more information students can go to <http://suvcw.org/mollus/mollus.htm> for rules and application procedures under the heading Lincoln-Juarez Historical Literary Essay 2012 Scholarship Competition for College Students.

Questions also can be addressed to Col. Eric Rojo at [eric@er-x.com](mailto:eric@er-x.com). The contest is sponsored by a legitimate organization, The Military Order of the Loyal Legion of the United States, and by the State of Puebla Mexico, and it costs nothing to enter.

## 2012 Annual Symposium for Translators and Interpreters

The Mid-America Chapter of the American Translators Association announces its 2012 Annual Symposium for translators/interpreters.

The US news and World Report listed Interpreter/Translator as one of “the 50 Best Careers of 2011” based on the data from the Labor Department. It is projected to show a faster-than-average increase in employment.

Would you like to learn about how to get started in this profession? Or learn some tips for improving the language business you already have? Join us for this event!

**2012 MICATA Annual Symposium: Broadening Horizons: New Skills for Translators and Interpreters**

*Professional development and networking for translators, Interpreters, language professionals and students*

Regnier Center at Johnson County Community College  
12345 College Blvd, Overland Park, KS

**Friday, March 23:**

Full-day pre-symposium workshops (SDL Trados – translation memory software; Translation & Transcription)  
Evening reception for all attendees (workshop, symposium, or both)

**Saturday, March 24:**

Full-Day symposium offering a variety of topics and net-working opportunities

**Sunday, March 25:**

ATA Certification Examination (advanced registration with the ATA required: [www.atanet.org](http://www.atanet.org))

Visit [www.ata-micata.org](http://www.ata-micata.org) to register and view the full program.

## NEED TO KNOW:

### Faculty Updates

Faculty & Coordinators: Merit Files are due in the main office by February 15, 2012. Please see the main office for any supplies you may need as you organize data from the last three calendar years (2009, 2010, 2011). We ask that you refrain as much as possible from using plastic sheet protectors, but rather you three hold punch the paper and place in the notebooks. The sheet protectors make it difficult to reinsert paperwork once removed.

## YOUR BUSINESS:

### Business Cooperative Announcements

**Tax Information:**  
W-2 Worksheets are now available for downloading in Firefly.

---

UNL's mileage reimbursement rate is unchanged for travel beginning January 1, 2012, remaining at \$.555/mile. UNL adheres to the federal mileage reimbursement rate.

## WATER COOLER:

### Office & Lab Notes

A Dongle, a cord used to connect an Apple MacBook to interface with classroom technology, is now available for checkout in the main office.

---

In order to assist you in tracking your copy use in 1107, we will be posting a spreadsheet by the copier periodically. Please note that your Copy Limit is for the whole year (Fall and Spring semesters) and not each term. Thank you!

## A Note About Library Funds

“... the allocation of library funds from the Foundation directly available to MLL faculty was discussed. The recommendation made and accepted is that the Foundation funds be divided equally among the faculty at assistant professor and assistant professor of practice ranks and above. Each of you, therefore, has \$414.00 available to order permanent library materials. You of course have the option of deciding to combine individual allocations and ordering on behalf of a group. In either case, please get your orders to Evelyn no later than Friday, February 17. Any funds unclaimed by then will be redistributed.”

## FEBRUARY CALENDAR

02/12	<ul style="list-style-type: none"><li>• Tuition and fee payment deadline</li></ul>
02/13	<ul style="list-style-type: none"><li>• Reappointment recommendations for 2012-2013 for faculty in 2nd year and beyond due Dean's</li><li>• Reappointment Recommendations for 2013-2014 for faculty in 2nd year and beyond due Dean's Office</li></ul>

# DMLL Language Club Information

## German Movie Night

Wednesdays  
7 pm  
\*See schedule below

## Chinese Table

Wednesdays  
4 - 5 pm  
Student  
Resource Center

## French Film Club

Wednesdays  
5 - 7 pm  
OLDH 203

## Stammtisch

Fridays  
5:00 - 6:30  
Yia Yia's Pizza  
1423 O St

## Japanese Table

100 & 200 Level:  
Mondays at 4:00  
300 Level:  
Fridays at 4:00 in  
Kawasaki Reading Room  
Contact:  
Dan Riley (472-9427)

## French Table

Thursdays  
3 - 5 pm  
Academic Grind

## German Club

1st Thursday of  
every month  
7 pm  
Language Resource  
Center

## Russian Table

Thursdays  
7 - 8 pm  
City Union

## Spanish Tutoring Center

Mon & Wed 1:00 - 2:00  
Tues & Wed 11:30-12:20  
Language Resource Center

## Spanish Table



## Spanish Cine Club

Thursdays  
4 - 6 pm  
Language Resource Center



# Deutscher Kino Abend - German Movie Night

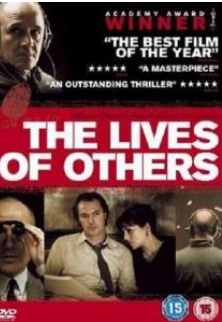
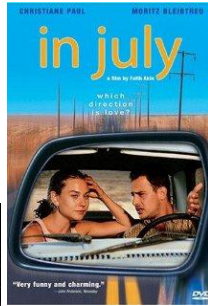
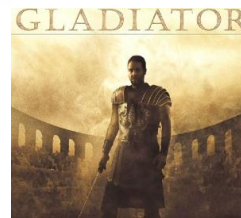
Mittwochs, 19 Uhr - Wednesdays, 7pm

1126 OLDH

All Films will be shown in German with English subtitles



Datum	Filme	Genre	Jahr
01/25/12	Keinohrhasen <small>in Burnett 115 (Auditorium)</small>	Comedy	2007
02/01/12	Corpse Bride – Hochzeit mit einer Leiche ( <i>Tim Burton's Corpse Bride</i> )	Animation	2005
02/08/12	Die Welle	Drama	2008
02/15/12	Mitten ins Herz – Ein Song für dich ( <i>Music and Lyrics</i> )	Romantic Comedy	2007
02/22/12	Im Juli	Roadmovie	2000
02/29/12	Ratatouille	Animation	2007
03/07/12	Das Leben der Anderen	History	2006
03/14/12	Gladiator	Action	2000
03/28/12	Last Semester's Favourite: Mord ist mein Geschäft, Liebling	Comedy	2009
04/04/12	Casablanca	Drama	1942
04/11/12	Der Baader Meinhof Komplex	History	2008
04/18/12	Harry Potter und der Gefangene von Askaban ( <i>Harry Potter and the Prisoner of Askaban</i> )	Fantasy	2004



# Harry Potter

4 to 6 pm Oldfather 1126

# Cine club en español

4 jueves 4 películas

año México Argentina Bolivia Alemania

23 Febrero. El ángel exterminador (1962)

8 Marzo. Smoking Room (2002)

29 Marzo. American Visa (2005)

19 Abril. Whisky (2004)